



SUPPORT MOBILE STROKE UNITS IN TEXAS

Let's Make Texas the National Leader in Stroke Care

During a Stroke, Every Minute Counts

- Stroke is one of the **leading causes of death and disability** in the United States, with Texans experiencing one of the highest rates of stroke in the nation.
- An estimated **1.9 million brain cells die every minute a stroke goes untreated**, leading to a significant loss of function. Rapid diagnosis and treatment are critical for improving survival rates and reducing the long-term impact of strokes.

Mobile Stroke Units as a Solution

- **Mobile Stroke Units (MSUs) are specialized ambulances equipped with a CT scanner and staffed with a team capable of diagnosing and treating stroke patients on-site.**
- By evaluating patients on-site, MSU teams can more quickly administer life-saving interventions, such as **tissue plasminogen activator (tPA)**, that have been shown to dramatically improve patient outcomes and prevent lasting loss of function.



Key Benefits of Mobile Stroke Units

- **Faster Treatment:** By administering treatment locally, MSUs can cut treatment times by more than 30 minutes compared to traditional hospital-based stroke care.
- **Improved Patient Outcomes:** A study in the Journal of American Medicine (JAMA) found that patients treated in an MSU were more likely to receive intervention within the first hour of symptom onset, leading to better recovery and reduced long-term disability.
- **Cost Savings:** By reducing the severity of stroke-related disabilities, MSUs can lower long-term costs associated with stroke rehabilitation and chronic care.
- **Rural Access to Care:** MSUs can also bridge the gap in stroke care access, especially in rural and remote areas where the nearest stroke center may be hours away.



Scan **HERE** to
see the **Mobile
Stroke Unit in
Action!**

HOW YOU CAN HELP IN THE 89TH LEGISLATIVE SESSION

This session, the Texas Neurological Society is asking the Texas Legislature to **restore funding for the Mobile Stroke Unit Grant Program** and consider additional policy changes to make it easier for MSUs to receive reimbursement for the life-saving treatment they provide.

By increasing the number of Mobile Stroke Units operating in Texas, we can **treat stroke patients faster and more effectively**, substantially improve patient outcomes, **expand rural access to stroke care**, and reduce long-term stroke-related disability and rehabilitation costs.

With your help, we can make Texas the **national leader** in stroke care.

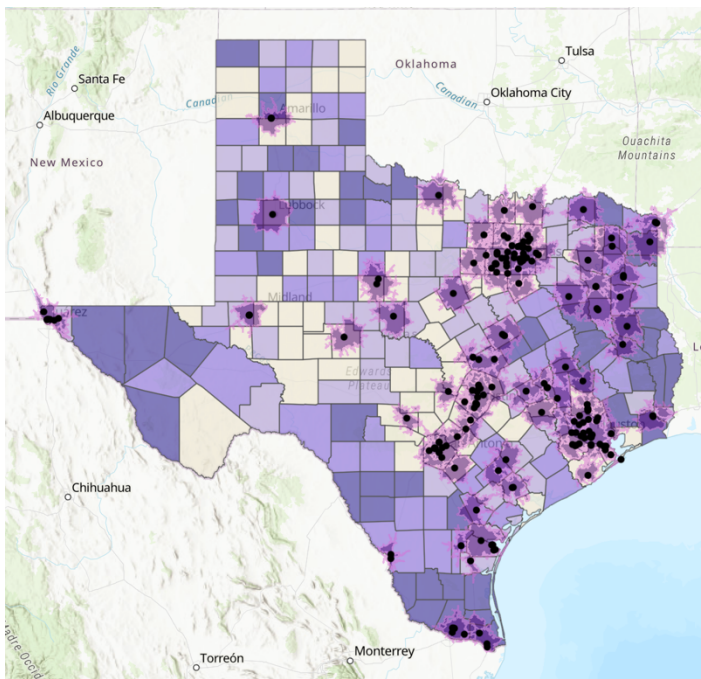
MOBILE STROKE UNITS IN RURAL TEXAS: Expanding Access to Critical Stroke Care

When a patient experiences a stroke, every minute of delayed treatment kills millions of additional brain cells. For many rural Texans, these costly delays can lead to irreversible brain damage or even death.

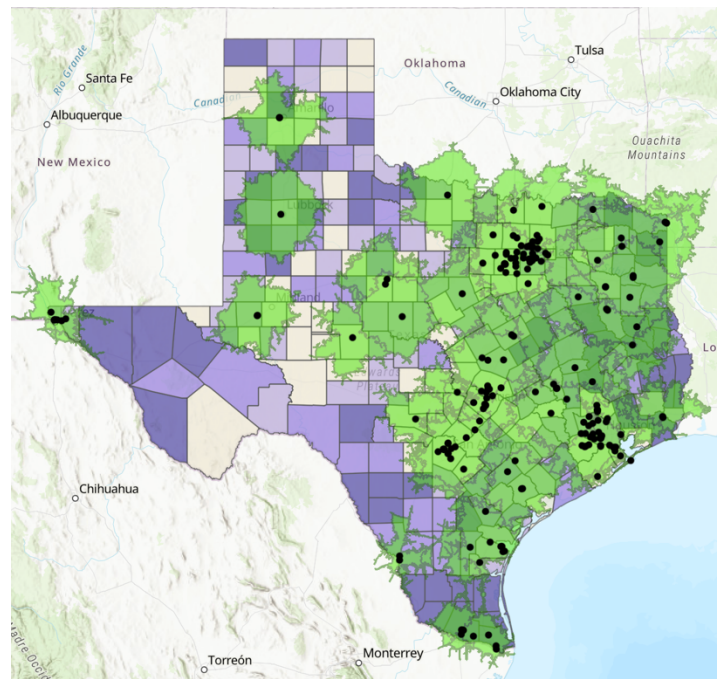
Mobile Stroke Units (MSUs) can dramatically improve access to stroke care in rural Texas, where patients often live many miles from a designated stroke treatment center. By treating stroke patients on-site, MSUs can extend the reach of these stroke treatment centers to ensure that rural Texans are able to receive critical intervention within the first hour of a stroke.

By expanding the availability of MSU care in rural and underserved communities, Texas can significantly reduce stroke-related death and disability, enhance survival rates, and improve recovery outcomes.

**“Golden Hour” range of typical EMS
dispatch from Stroke Treatment Center
(60 min round trip, hospital to patient to hospital)**



**“Golden Hour” range of typical MSU
dispatch from Stroke Treatment Center
(60 min one way, hospital to patient)**



About the Texas Neurological Society

The Texas Neurological Society is a physician-led organization dedicated to advancing the field of neurology in Texas through education, advocacy, and the promotion of high-quality neurological care.

Representing neurologists, neurosurgeons, and healthcare professionals across the state, TNS works to improve patient outcomes by supporting clinical research, providing continuing medical education, and advocating for policies that improve access to neurological care.

With a focus on collaboration and innovation, the society works to address the unique healthcare challenges facing Texas' diverse population, particularly in areas of stroke care, epilepsy, multiple sclerosis, and other neurological disorders.